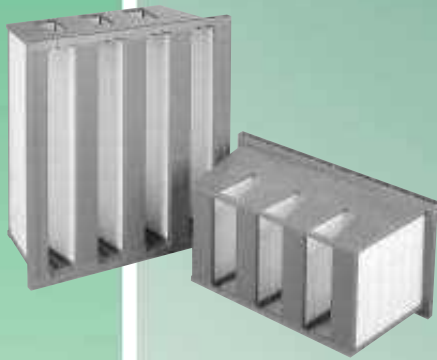


## Rigid Pocket filters

### Filtra-Pak TRP



High efficiency Filtra-Pak TRP rigid pocket filters are a modern alternative for air filtration systems compared to soft bag filters. The medium is made of glass fiber paper, water-proof, closely folded and separated by continuous thermal-plastic spacers. The packs are arranged in a V shape in a perfectly tight polystyrene holding frame. All the filters have high filtration efficiency rates, are less deep than soft bag filters, high dust holding capacities and robust construction. Pressure drop is limited and fan energy consumption levels are limited. At the end of their operating life these filters have to be replaced; they can be totally burned.

| Product                       | TR P-G  | TR P-F  | TR P-H  | TR P-R  |
|-------------------------------|---------|---------|---------|---------|
| UNI EN 779 class              | F 6     | F 7     | F 9     | ---     |
| EUROVENT class                | EU 6    | EU 7    | EU 9    | EU 10   |
| UNI EN 1822 class             | ---     | ---     | ---     | H 10    |
| Em ASHRAE 52.1.1992           | 60-80 % | 80-90 % | 95 <Em  | ---     |
| Suggested final pressure drop | 450 Pa  | 450 Pa  | 450 Pa  | 450 Pa  |
| Maximum pressure drop         | 1000 Pa | 1000 Pa | 1000 Pa | 1000 Pa |
| Maximum operating temperature | 70 °C   | 70 °C   | 70 °C   | 70 °C   |
| Maximum relative humidity     | 100 %   | 100 %   | 100 %   | 100 %   |

#### Applications

Filtra-Pak TRP rigid pocket filters are used in civil and industrial systems which require high filtration efficiency levels and high air cleanliness levels. They are especially suitable for installation in: pharmaceutical, food, electronic, photographic industries, laboratories, computer rooms, telephone plants, hospitals. Filtra-Pak TRP filters are the filter of choice in variable air flow systems (VAV), in situations with frequent fan stopping and in general, in very heavy operating conditions.

#### Installation

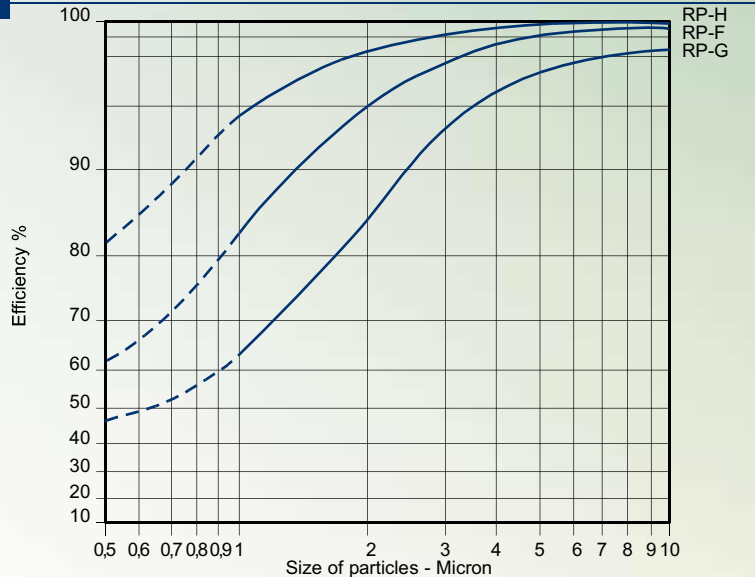
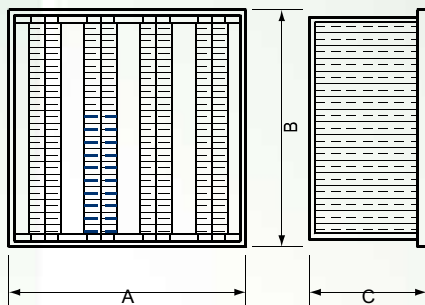
The installation of Filtra-Pak TRP rigid pocket filters offers several alternatives compared to soft bag filters. They can be installed in any position: horizontal, vertical, duct and even reversed flow. Their frames allow for interchangeability with traditional bag filters. You can use both standard counter-frames, CT mod., or duct housings Multimod mod. in the new installations.

| Type TR P | Dimensions (mm) |       |       | Nominal air rate flow |                                     | Filtration media m <sup>2</sup> | Initial pressure drop Pa |        |        |  |
|-----------|-----------------|-------|-------|-----------------------|-------------------------------------|---------------------------------|--------------------------|--------|--------|--|
|           | A               | B     | C     | m <sup>3</sup> /h     | m <sup>3</sup> /sx10 <sup>-3*</sup> |                                 | TR P-G                   | TR P-F | TR P-H |  |
| G - F - H |                 |       |       |                       |                                     |                                 |                          |        |        |  |
| 55        | 595             | x 287 | x 292 | 2500                  | 694                                 | 8,9                             | 140                      | 150    | 190    |  |
| 56        | 595             | x 490 | x 292 | 4100                  | 1138                                | 14,5                            | 140                      | 150    | 190    |  |
| 54        | 595             | x 595 | x 292 | 5000                  | 1388                                | 18                              | 140                      | 150    | 190    |  |
| 55 p      | 595             | x 287 | x 75  | 1500                  | 416                                 | 4,2                             | 140                      | 150    | 190    |  |
| 54 p      | 595             | x 595 | x 75  | 3000                  | 833                                 | 8,5                             | 140                      | 150    | 190    |  |
| TR P - R  |                 |       |       |                       |                                     |                                 |                          |        |        |  |
| 55        | 595             | x 287 | x 292 | 2100                  | 583                                 | 8,9                             |                          | 220    |        |  |
| 56        | 595             | x 490 | x 292 | 3400                  | 944                                 | 14,5                            |                          | 220    |        |  |
| 54        | 595             | x 595 | x 292 | 4250                  | 1180                                | 18                              |                          | 220    |        |  |
| 55 p      | 595             | x 287 | x 75  | 1250                  | 347                                 | 4,2                             |                          | 220    |        |  |
| 54 p      | 595             | x 595 | x 75  | 2500                  | 694                                 | 8,5                             |                          | 220    |        |  |

#### Size

\*1 m<sup>3</sup>/s x 10<sup>-3</sup> = 1 l/s

#### Typical curves



# Technomart

Kamrabad, Fullorhat (Near Fullorhat Yuba Sangha), Sonarpur, Kolkata - 700 150, W.B., India  
 Tel : +91 9830156166 / 9230556166 / 9230518809 Fax : +91 33 2434 6692  
 e-mail : technomart@vsnl.net, Web : www.techno-filter.com